



advanced innovation technology



2009 product catalogue for competition cars

2009 Products Index

• Handbrake levers and master cylinder kits	p. 3
• Brake pedal box and braking balance bar	p. 4
• Universal pedal assembly	p. 5
• Quick release steering wheel bosses	p. 6
• Competition steering wheels	p. 7
• Quick lift for rally cars / Air-jack and accessories	p. 8
• Blow-off and Waste-Gate actuators	p. 9
• Silicone hoses for tuning and competition / Tow hooks	p. 10
• Special head gasket and head bolts	
Thermal and acoustic insulation materials	p. 11
• Special nuts, studs and bolts for wheels	p. 12
• Competition wheel spacers	p. 15
• Clutch drive discs and pressure plate assemblies	p. 16
• Special dashboard, gauges and chronometers	p. 18

Are you ready for technology?



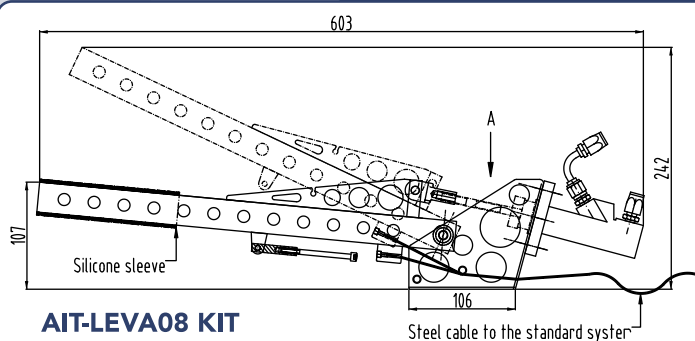
Advanced Innovation Technology (A.I.Tech.) is dedicated to the pursuit and development of new motorsport techniques. Advanced lightweight materials, innovation and performance feature strongly in the development of all **A.I.Tech.** products.

Computer aided design and C.N.C. production facilities ensure the highest levels of efficiency and quality. **A.I.Tech.** instrumentation feature the very latest available electronic processors and production techniques, resulting in unsurpassed build quality that delivers reliability even in the toughest conditions.

The progressive team at **A.I.Tech** are people you can trust with over 20 years of motorsport engineering experience giving them a head start in the race for your customer satisfaction. Impressive inventory levels ensure delivery targets can be met from their extensive range of products using express world wide delivery.

...we are ready to win!

AIT-LEVA-A KIT



AIT-LEVA08 KIT

AIT-LERG08 KIT



AIT-TANDEM08



AIT-LEVERT08 KIT



Handbrake lever production for 2009 feature a revised specification. Longer levers for less driver effort, lighter weight with no loss of strength plus the addition of the new **A.I.Tech** cable system. Most O.E. hand brake cables can be easily attached to the new levers therefore meeting production and use legislation and FIA regulations.

AIT-VERT08



AIT-BV08



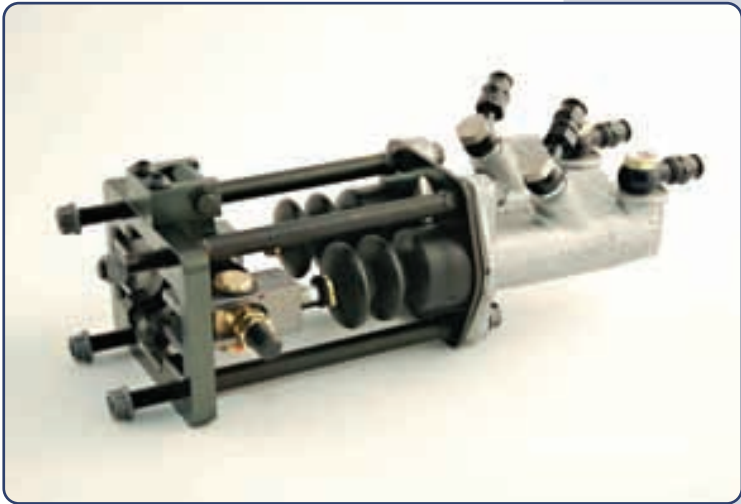
AIT-500 KIT

AIT-BV08 Brake line valve. This gate close off hydraulic line after of handbrake (first apply firm/hard pressure to brakes, then lock valve). Use for short term parking or changing wheels.
Total external dimensions: 60x86 mm

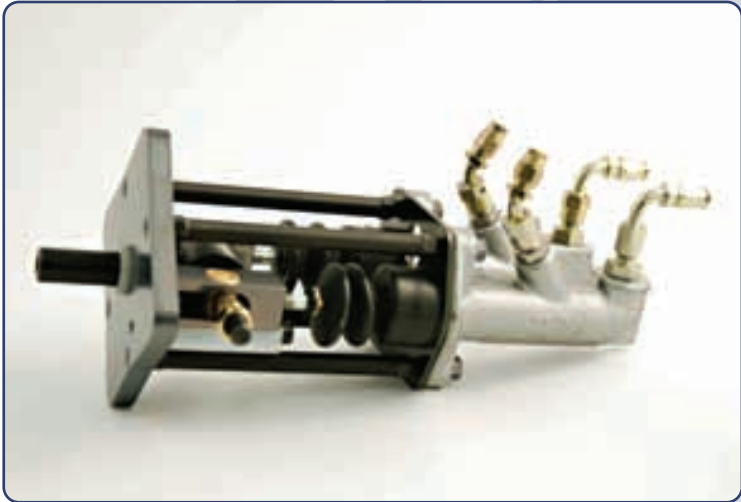
AIT-500KIT 3 ways junction (M10 thread) ergal alloy with fixing bolts (without fittings).

In modern racing cars, brake bias and balance is critical to the overall car setup. **A.I.Tech.** offers a wide choice of brake boxes either for direct brake pedal or servo assistance systems. Both types have the balance bar fitted within the assembly. Cockpit remote cable adjusters can be ordered separately. You may ask for master cylinders, hoses and fittings.

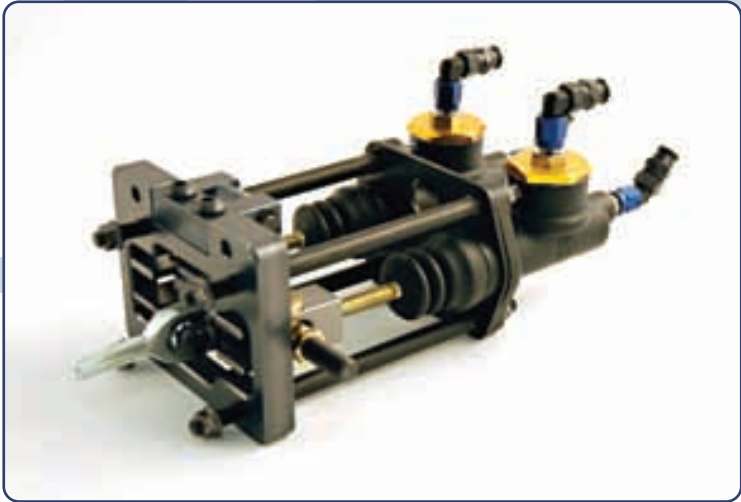
for more technical informations please visit www.aitechitaly.com



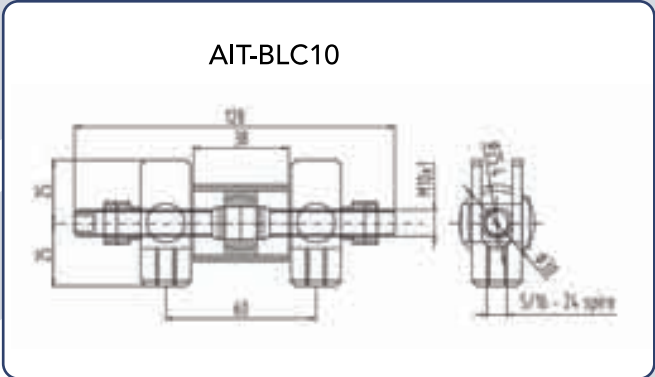
Ref. **AIT-C16 KIT** - standard pedal box kit



Ref. **AIT-C26 KIT** - pedal box for servo-brake kit

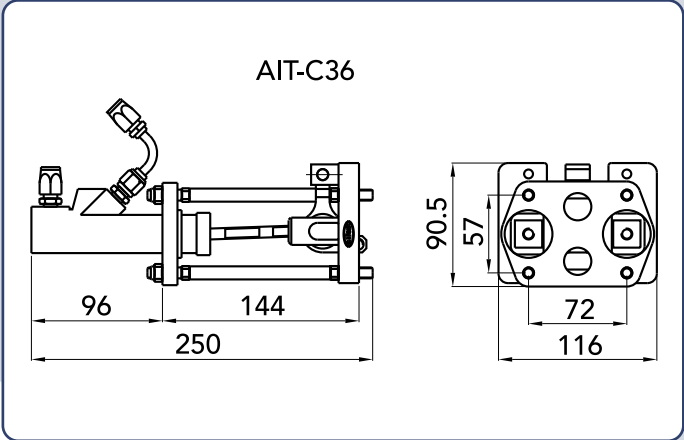


Ref. **AIT-C36 KIT** - large pedal box kit



Braking balance bar **AIT-BLC10** is an essential component for braking balance adjustment constructed in 39NiCrMo3 treated steel which is then threaded using a thread rolling process so as not to compromise strength compared to conventional threading procedures.

The **AIT-BLC10** is the same balance bar used in the AIT-C16, 26 and 36 brake pedal box assemblies for several years, ensuring safety, reliability and quick adjustment.



Suggested applications: **AIT-C16** for small and medium cars , **AIT-C26** universal for servobrakes, **AIT-C36** for big cars and 4x4 off-road

AIT-C50



Universal pedal assembly **AIT-C50** is engineered to be easily adaptable to practically any floor board. Constructed using very high strength light weight materials ensuring performance and safety. The pedal contact surface is covered with an anti-slip material and offers 30mm of adjustment.

- Base 300mm x 150mm
- Overall height 255/285 mm (adjustable pedal)
- Overall width 260mm (from threaded ends)
- Pedal spacing 100 mm centre
- Weight approx. 2.4 kg

Optional parts available separately : balance bar **AIT-BLC10** (as used in all A.I.Tech pedal boxes) 128 mm shaft, full adjustment brake balance bar manufactured from very high strength steel. Balance bar remote adjuster cable **AIT-CR110**. A new very flexible cable featuring a 4 quarter detent positioning system and a large Red hexagonal anodised knob. **AIT-FRP** Self adhesive anti-skid pedal friction pads (supplied in kits of 3 pieces).

AIT-C55/08KIT



A.I.Tech propose new brakes system components to his customers, reference are **AIT-C55/08** (three pedal assy floor mount) and the **AIT-C60** (three pedal assy. overhung).

- Very safe and strong mechanisms incorporating light weight and compact design.
- CAD drawn and CNC machined from Ergal aluminium billet.
- Adjustable pedal positions for both height, width/floor fixing.
- High tensile grade steel bolts and nuts.
- Design accepts all major manufacturers master cylinders (Alcon- Tilton- AP-Girling-Brembo).
- The adjustable stroke throttle pedal features double return springs & can accommodate push or pull throttle systems.
- Base mounting: 150 x 310 mm. (width can be easily reduced down to 270 mm if desired)
- Pedal height adjustments available from 210 mm to 242 mm.
- Pedal width adjustments available from 230 mm to 300 mm.
- Pedal assy weight including balance bar, master cylinders, bolts etc ONLY 2.85 Kgs. - Weight w/o flat base : 2,00 Kgs



AIT-C60/08KIT

AIT-ST-BOX - Competition Steering Box

This unit is extremely rigid, machined from a solid aluminium billet. It is lightweight and easy to mount.

The rack and pinion manufactured from tempered and hardened steel has a 15/24 ratio. The mounts are at 500mm PCD and consists of 4x8mm bores. Total weight: 2.5kg. Application: Formula cars and sports cars.

AIT-CR110

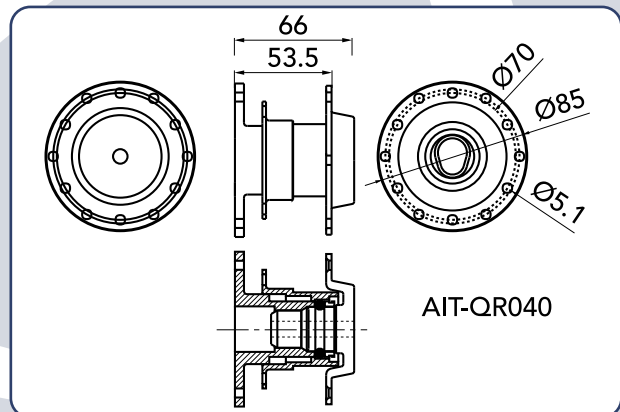
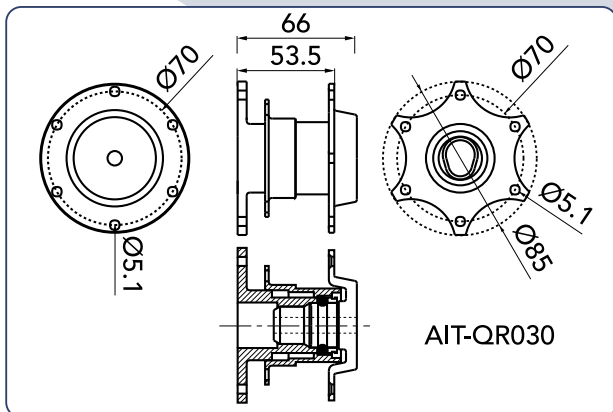
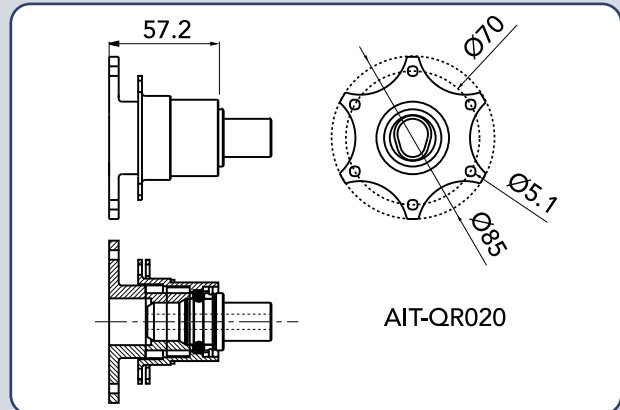
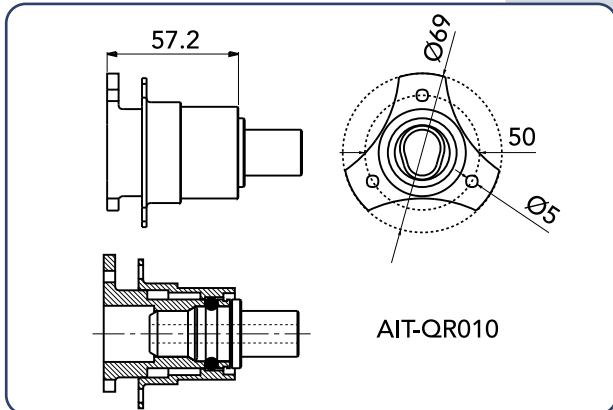


AIT-ST-BOX



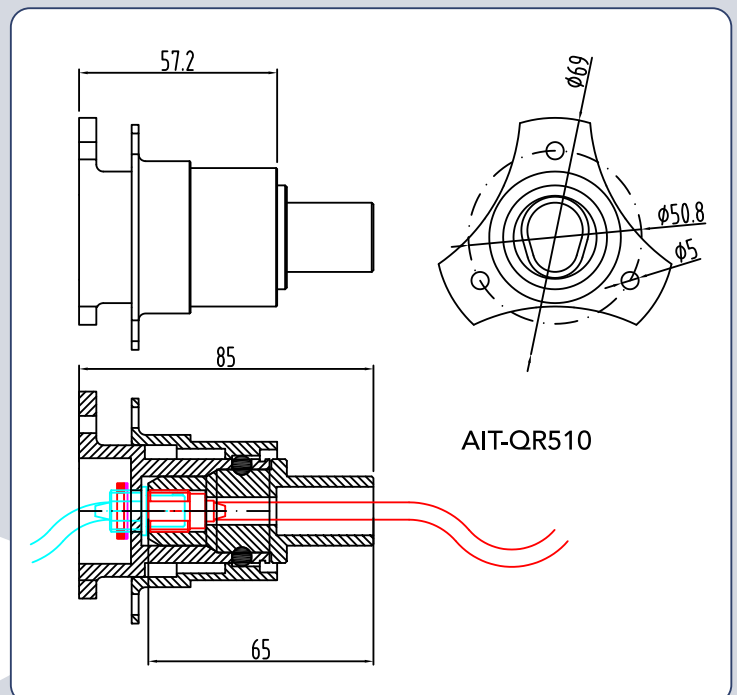


AIT-QR010	Formula	3 holes M5 PCD 50mm
AIT-QR020	Touring	6 x M5 PCD 70mm Momo-Omp-Sabelt-Sparco
AIT-QR022	Touring	6 x M5 PCD 74mm Personal-Nardi
AIT-QR030	Gr. N	6 x M5 PCD 70mm Momo-Omp-Sabelt-Sparco
AIT-QR032	Gr. N	6 x M5 PCD 74mm Personal-Nardi
AIT-QR035	Gr. N	6 x M5 PCD 70mm Momo - Omp - etc. with steel hub
AIT-QR037	Gr. N	6 x M5 PCD 74mm Personal-Nardi with steel hub
AIT-QR040	Gr. N	6 + 6 double holes Momo/Nardi
AIT-QR045	Gr. N	6 + 6 double holes Momo/Nardi with steel hub
AIT-QR510	Formula	3 holes M5 PCD 50mm (P)
AIT-QR520	Touring	6 x M5 PCD 70mm Momo-Omp-Sabelt-Sparco (P)
AIT-QR530	Gr. N	6 x M5 PCD 70mm Momo-Omp-Sabelt-Sparco (P)
AIT-QR545	Gr. N	6 + 6 double holes Momo/Nardi with steel hub (P)



A.I.Tech quick release steering boss's are now available for multi connection electrical connectors. The incursion of the digit 5 denotes the electrical model (**AIT-QR510 - QR520 - 530 - 545** opposed to **AIT-QR010 - QR020** etc). Detailed drawing and Wiring colour key available.

This system utilises the LEMO 14 pin connection. This system facilitates the use of steering wheel buttons and gear gear change padles. Small production runs can be ordered (customer specification/drawing required) enabling the unique elliptical pivot to connect to the customers OE steering shaft in conjunction with the Lemo connection (ECG.1B.314.CLL - FAG.1B.314.CL).



AIT-STW330



A.I.Tech steering wheels - 2009 range

We offer wheels for Race, Rally and Formula cars in various styles and dish depth with standard 3 and 6 bolt fittings. Finished in black suede leather.

for more technical informations please visit
www.aitechitaly.com

AIT-STW350/F



AIT-STW350/2



AIT-STW280 280mm Sport and Formula application.
Black suede leather, 3 spokes flat (3 holes x 52mm pcd. or blank)

AIT-STW280/F 280/230mm Sport and Formula application.
Black suede leather, 3 spokes flat (3 holes x 52mm pcd. or blank)

AIT-STW330 330mm Rally and Touring Cars.
Black suede leather, 3 spokes dished 75mm (6 holes x 70mm pcd.)

AIT-STW350/2 350mm Rally and Touring Cars.
Black suede leather, 2 spokes dished 90mm (6 holes x 70mm pcd.)

AIT-STW350/3 350mm Rally and Touring Cars.
Black suede leather, 3 spokes dished 75mm (6 holes x 70mm pcd.)

AIT-STW350/F 350mm Rally and Touring Cars.
Black suede leather, 3 spokes flat (no dished) (6 holes x 70mm pcd.)

AIT-STW280/F



AIT-LIFT07
(closed)



AIT-LIFT09

Pivot action machined from billet steel. Exceptionally strong design 14 strokes lift most cars with flat tyre in 10 seconds – Zero down. Alloy foot with roll feature.

Supplied with lifting pin to your diameter at no extra cost. Separate/additional lifting pins available on request. The lifting system of this impressive jack is exceptionally strong as it is machined from billet steel.

NEW 2009 model is the rotating adjustable pivot that allow a more vertical lifting in comparison of the past models (available on market soon).

The shaft is cold drawn steel tube and the foot Ergal alloy. This lift is durable, trouble free and virtually unbreakable enabling us to offer you a 3 year warranty with every jack.

This quick lift jack must not be confused with any previous or " similar looking " jack on the market.

AIT-LIFT07
(in use)



Air-Jack and accessories

A.I.Tech Air-Jack

High strenght aluminium airjacks offering high stability and featuring innovative design, very fast release, 230 mm stroke and 300 mm stroke available.

In this range is available a new 600mm airjack wich is suggested for heavy 4x4 off-road and race trucks. 2009 News are the Pro serie with 50 mm foot for greater stability and safety.



AIT-SJ230



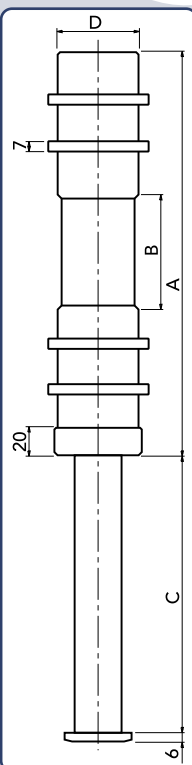
AIT-TJ220



AIT-AJ230



AIT-PRO300



AIT-AJ230/AIT-PRO230 High strenght aluminium air-jacks for race cars (A) 304 / (B) 80 / (C) 230 / (D) 59 mm

AIT-AJ300/AIT-PRO300 High strenght aluminium air-jacks for race cars (A) 354 / (B) 130 / (C) 300/ (D) 59 mm

AIT-AJ600 High strenght aluminium air-jacks for race trucks (A) 740 / (B) 340 / (C) 600 / (D) 148 mm

AIT-TJ220/AIT-TJP220 Steel tower for extra lift at the standard air-jack stroke for cars

AIT-TJ600 Steel tower for extra 600mm lift at the standard air-jack lifts for trucks

AIT-SJ230/AIT-SJP230 Cast aluminium safety prop system 230mm stroke

AIT-SJ300/AIT-SJP300 Cast aluminium safety prop system 300mm stroke

AIT-SJ600 Cast aluminium safety prop system 600mm stroke

AIT-CM10 Air male connection to the car

AIT-CF10 Air fem. connection to the hose

for more technical informations please visit
www.aitechitaly.com



"B" VALVES SERIES

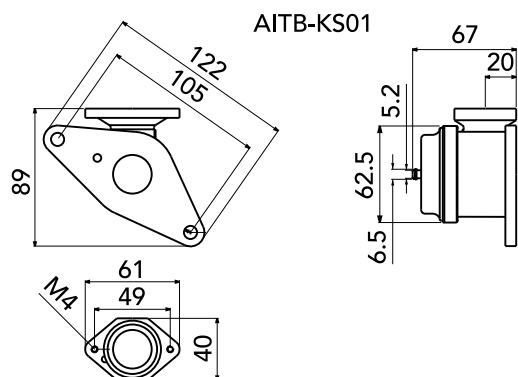
A.I.Tech dump valves reduce turbo lag and turbine stalling.

Options include: closed circuit or venting to air, Kevlar/silicone rubber diaphragm or piston type valves.

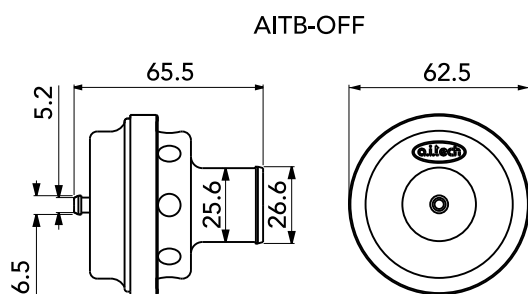
Service parts available: replacement diaphragms, springs and pistons.

A.I.Tech waste gate actuators are available with alternative strokes and springs of alternative strength.

(please take note to the index - AIT dump valves prefixed with the letter 'B' indicate diaphragm type. Letter AJ and W indicate piston type).



AITB-KS01



AITB-OFF

for more technical informations
please visit www.aitechitaly.com

- AIT-B-OFF-K** Turbo dump valve venting to air
- AIT B-DEB-K** Turbo dump valve for recyrclc closed circuit
- AIT B-DEB-KS** as above for SUBARU Impreza till '99 m.y.
- AIT B-KS99** as above for SUBARU Impreza till '00 m.y.
- AIT B-KS01** as above for SUBARU Impreza '01 m.y. --->
- AIT-B-RIC** Rebuild kit (membrane,spring,cup, nylon rings for above "B" type)
- AIT-B-RIC 2** Heavy duty spare spring "type 2" with nylon rings
- AIT-B-RIC 3** Heavy duty spare spring "type 3" with nylon rings
- AIT-OFF-AJ07** Dump valve-piston type adjustable (red - blue or silver)
- AIT-DEB-AJ07** Recycle closed circuit, dump valve-piston type (red - blue or silver)
- AIT-W-G07** Valve Waste Gate universal (red - blue or silver)



AIT-DEB-AJ07



AIT-OFF-AJ07



AIT-W-G07

Silicone Hoses for Tuning and Competition

A.I.Tech has now its own silicone hose production. Very high resistance at UVA and UVI rays, these hoses are designed for continuous use in heating and coolant system at extreme temperatures -60°C to + 180°C. These upgraded hoses and stronger parts are interchangeable with standard hoses. These hoses do not change the internal diameter also if under V.H. pressures. All these kits are available in shiny blue, red and yellow finishing colours. The high pressure range is between 5.6 and 12.7 bars.

AHL 6,5	Straight 1 mt. Length I.d. 6,5 mm	AHL 45	Straight 1 mt. Length I.d. 45 mm
AHL 8	Straight 1 mt. Length I.d. 8 mm	AHL 48	Straight 1 mt. Length I.d. 48 mm
AHL 9,5	Straight 1 mt. Length I.d. 9,5 mm	AHL 51	Straight 1 mt. Length I.d. 51 mm
AHL 11	Straight 1 mt. Length I.d. 11 mm	AHL 54	Straight 1 mt. Length I.d. 54 mm
AHL 13	Straight 1 mt. Length I.d. 13 mm	AHL 57	Straight 1 mt. Length I.d. 57 mm
AHL 16	Straight 1 mt. Length I.d. 16 mm	AHL 60	Straight 1 mt. Length I.d. 60 mm
AHL 19	Straight 1 mt. Length I.d. 19 mm	AHL 63	Straight 1 mt. Length I.d. 63 mm
AHL 22	Straight 1 mt. Length I.d. 22 mm	AHL 70	Straight 1 mt. Length I.d. 70 mm
AHL 25	Straight 1 mt. Length I.d. 25 mm	AHL 76	Straight 1 mt. Length I.d. 76 mm
AHL 28	Straight 1 mt. Length I.d. 28 mm	AHL 80	Straight 1 mt. Length I.d. 80 mm
AHL 32	Straight 1 mt. Length I.d. 32 mm	AHL 83	Straight 1 mt. Length I.d. 83 mm
AHL 35	Straight 1 mt. Length I.d. 35 mm	AHL 89	Straight 1 mt. Length I.d. 89 mm
AHL 38	Straight 1 mt. Length I.d. 38 mm	AHL 92	Straight 1 mt. Length I.d. 92 mm
AHL 41	Straight 1 mt. Length I.d. 41 mm	AHL 102	Straight 1 mt. Length I.d. 102 mm



AE 6,5	Elbow 6,5 mm I.d.	AE 32	Elbow 32 mm I.d.	AE 63	Elbow 63 mm I.d.
AE 8	Elbow 8 mm I.d.	AE 35	Elbow 35 mm I.d.	AE 70	Elbow 70 mm I.d.
AE 9,5	Elbow 9,5 mm I.d.	AE 38	Elbow 38 mm I.d.	AE 76	Elbow 76 mm I.d.
AE 11	Elbow 11 mm I.d.	AE 41	Elbow 41 mm I.d.	AE 80	Elbow 80 mm I.d.
AE 13	Elbow 13 mm I.d.	AE 45	Elbow 45 mm I.d.	AE 83	Elbow 83 mm I.d.
AE 16	Elbow 16 mm I.d.	AE 48	Elbow 48 mm I.d.	AE 89	Elbow 89 mm I.d.
AE 19	Elbow 19 mm I.d.	AE 51	Elbow 51 mm I.d.	AE 92	Elbow 92 mm I.d.
AE 22	Elbow 22 mm I.d.	AE 54	Elbow 54 mm I.d.	AE102	Elbow 102 mm I.d.
AE 25	Elbow 25 mm I.d.	AE 57	Elbow 57 mm I.d.		
AE 28	Elbow 28 mm I.d.	AE 60	Elbow 60 mm I.d.		

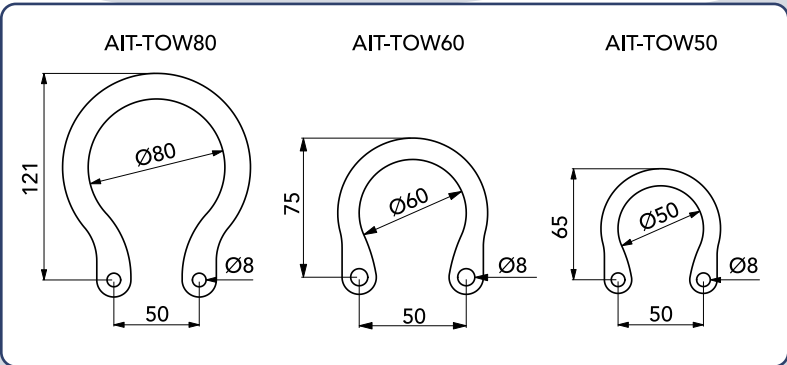
Elbows available in 45° and 90° angles

The recommended working pressure is from 2.1 to 4.2 bar (pressure depending on shape and size). Finishing colour is shining blue. The straight lengths are of 1 mt with inside diameter ranging from 6 mm to 127 mm. **A.I.Tech** also manufactures elbows of any angle, reducers, multiple bends, convoluted, corrugated or spiral reinforced hoses. More than 200 **A.I.Tech** silicone hoses available: quotations on demand.

Tow Hooks

Special aluminum towing eye as per **FIA** specification, cut from 8 mm thick ergal alloy billet. Are sold complete with high tensile m8 bolts and nuts. These tow hooks are offered in three different sizes (50,60 and 80 mm) all in red or yellow colour.
AIT-TOWFIX connection between **AIT-TOW** and car body is now available.

for more technical informations
please visit www.aitechitaly.com





for more technical informations
please visit www.aitechitaly.com

Wide range of special gaskets for sports cars, racing cars, vintage cars. We can supply gaskets of various thickness and piston diameters from custom-designed shapes and sizes. We can also offer gaskets taken from samples or from design guaranteeing highest quality standards.

The materials used are carefully selected and are chosen from highest technology, guaranteeing maximum resistance and the highest of performance. Please note simplified price structure. One price for 4 cyl. and one price for 6 cyl.

A.I.Tech special cylinder head bolts are a direct replacement for the standard bolts. These bolts are made from very high tensile steel blanks. Basic machining is carried out prior to heat treating and then finally the finishing process cleans up the thread profile. These bolts help to protect the head gasket integrity in uprated engines. Special group A and WRC cyl. head bolts are available on demand.

Thermal and acoustic insulation materials



AIT-TK-FIBER



AIT-S-GLASS



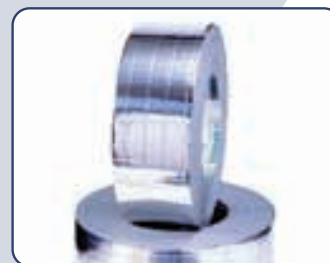
AIT-S-FELL



AIT-S-LITE



AIT-S-ECO



AIT-S-ALL

AIT-TK-FIBER

Embossed aluminium, very high resistance to radiant heat. Adhesive. Minimum temperature of application -23° C Temperature resistance for continuous use from -27° C to 149° C Temperature resistance for intermittent use 200° C Important note: Teknofibra must be applied at least 3-4mm from heat sources that surpass 350° C. Clean carefully the parts where it will be applied. Sealing the sides, with specified embossed adhesive aluminium tape is highly recommended. Size 1 mtr. X 0.73 mtr. X 2 (or 4) mm thickness.

AIT-S-LITE

E-glass fiber fabric, 1 side coated with a metal aluminium film, 1 side with pressure adhesive film. Weight ca. 400 g/m², size 1 mtr. X 1 mtr. nominal thickness about 0.6 mm th. Self adhesive.

AIT-S-GLASS

E-glass fiber fabric, 1 side coated with alu-polymer film, 1 side with pressure adhesive film. Weight 1 kg/m², size 1 mt. x 1 mt. X 1,1 mm thickness. Self adhesive.

AIT-S-FELL

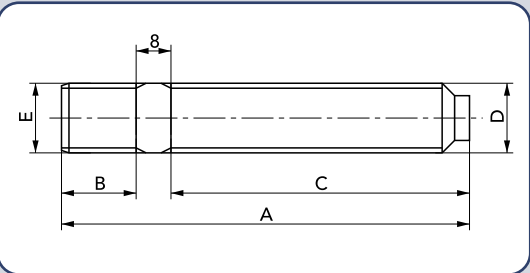
E-glass needled felt (9 mm), 1 side with metal aluminium film, 1 side with pressure sensitive adhesive. Nominal thickness from, weight (according the thickness) from 0,9 ÷ 1,1 kg/m² size 1 mtr. X 1 mtr. X 1,0 mm thickness.

AIT-S-ECO

Mylar blanket, simple layer heat shield not self adhesive. Size 1mt.X 1mt. X 0,5 mm thickness.

AIT-S-ALL

Fiber reinforced 120 micron aluminium foil, self strong adhesive roll. 50 mt length - 50 mm height.



DOUBLE THREAD STUD

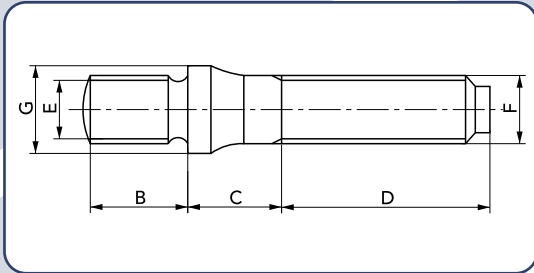


We offer specialty wheel studs and bolts manufactured from high tensile steel which undergo a thread rolling process to reduce the risk of fatigue related failures.

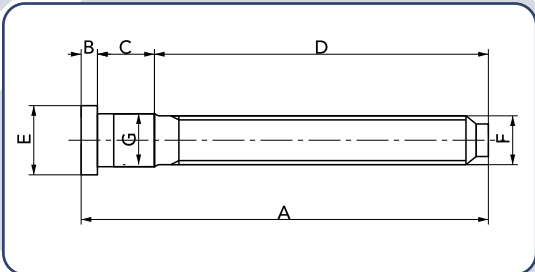
Knowledge from our competition experience has led us to use a dissimilar material for the nut from that for the wheel stud. The additional copper coating of the nut assures security.

The latest addition to our range is the competition quality special aluminum wheel nut manufactured in Ergal 7075.

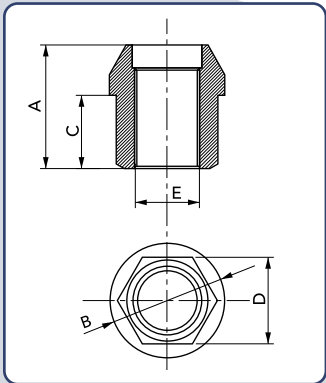
www.aitechitaly.com



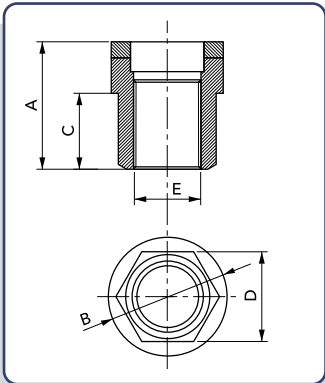
DOUBLE THREAD XAB STUD



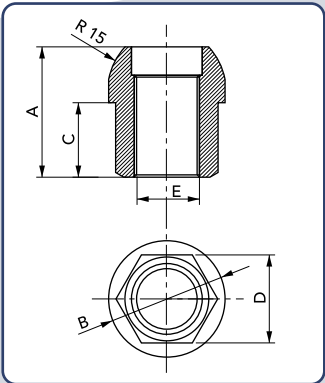
SPLINED STUD



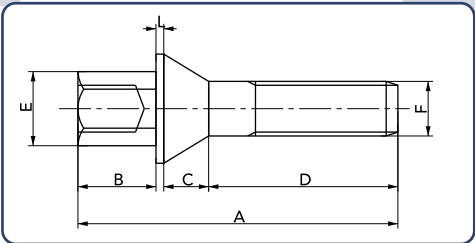
CONICAL SEAT NUT



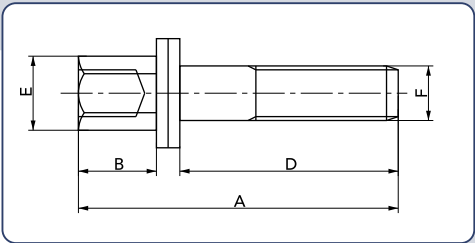
FLAT SEAT NUT



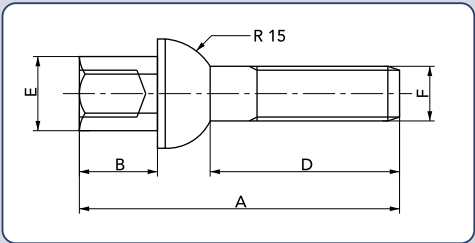
SPHERICAL SEAT NUT



CONICAL SEAT BOLT



FLAT SEAT BOLT



SPHERICAL SEAT BOLT

SPLINED STUD

Ref.	A	B	C	D	E	F	G
AIT-68C	68	4	14	50	17	12 x 1,5	12,8
AIT-82C	82	4	14	64	17	12 x 1,5	12,8
AIT-100C	100	4	14	82	17	12 x 1,5	12,8
AIT-65CH	65	4	15	45	20	½" UNF	15,7
AIT-68CH	68	4	7	57	20	12 x 1,5	14,9
AIT-100G	100	5	13	82	20	14 x 1,5	14,8
AIT-64HY	64	4	10	50	17	12 x 1,5	14,4
AIT-68H	68	5	11	52	19	12 x 1,5	12,3
AIT-61M	61	4	8	42	20	12 x 1,5	14,7
AIT-65M	65	4	11	50	17	12 x 1,5	13
AIT-67MIT	67	3	7	57	18	12 x 1,5	14,2
AIT-62N	62	5	7	50	20	12 x 1,25	14,2
AIT-64N	64	4	10	50	19	12 x 1,25	12,8
AIT-60R	60	4	11	45	18	12 x 1,5	12,3
AIT-66S	66	5	10	51	19	12 x 1,25	14,2
AIT-68STR	68	9	15	51	24	14 x 1,5	16,9
AIT-73T	73	5	9	59	18	12 x 1,5	14,3
AIT-69V	69	4	10	55	18	12 x 1,5	12,4
AIT-70V	70	5	17	48	21	12 x 1,5	16,3
AIT-72J	72	5	10	57	18	½" UNF	13,7
AIT-59D	59	3	10	46	19	12 x 1,25	12,4
AIT-70AR	70	5	10	55	20	12 x 1,5	13,8
AIT-74V	74	4	13	57	18	12 x 1,5	13,5
AIT-81AR	81	5	19	57	22 x 19	12 x 1,5	12
AIT-84J	84	5	7	72	17	½" UNF	13,4
AIT-55F	55	5	15	35	20	14 x 1,5	14,9
AIT-74NSR	74	6	14	54	24	5/8"	17,5
AIT-108NSR	108	6	14	88	24	5/8"	17,5

DOUBLE THREAD XAB STUD (reinforced root)

Ref.	A	B	C	D	E	F	G
AIT-70XA	70	13	12	45	12 x 1,25	12 x 1,25	18 x 15
AIT-70XB	70	13	12	45	12 x 1,5	12 x 1,25	18 x 15
AIT-84XA	84	13	12	59	12 x 1,25	12 x 1,25	18 x 15
AIT-84XB	84	13	12	59	12 x 1,5	12 x 1,25	18 x 15
AIT-90XD	90	15	12	63	½" UNF	½" UNF	18 x 9/16"

DOUBLE THREAD STUD (for universal applications)

Ref.	A	B	C	D	E
AIT-68A	68	15	46	12 x 1,25	12 x 1,25
AIT-82A	82	15	59	12 x 1,25	12 x 1,25
AIT-100A	100	15	77	12 x 1,25	12 x 1,25
AIT-68B	68	15	46	12 x 1,25	12 x 1,5
AIT-82B	82	15	59	12 x 1,25	12 x 1,5
AIT-100B	100	15	77	12 x 1,25	12 x 1,5
AIT-68F	68	15	46	14 x 1,5	14 x 1,5
AIT-82F	82	15	59	14 x 1,5	14 x 1,5
AIT-100F	100	15	77	14 x 1,5	14 x 1,5
AIT-70OP	70	15	47	12 x 1,5	12 x 1,5
AIT-90OP	90	15	67	12 x 1,5	12 x 1,5
AIT-100OP	100	15	77	12 x 1,5	12 x 1,5
AIT-71M	71	15	48	14 x 1,5	14 x 1,25
AIT-80M	80	15	57	14 x 1,5	14 x 1,25

CONICAL SEAT NUT

Ref.	A	B	C	D	E
AIT-DADO	25	23	14	19	12 x 1,25
AIT-DADO1	25	23	14	19	12 x 1,5
AIT-DADO2	28	28	13	19	12 x 1,5
AIT-DADO4	27	25	16	22	14 x 1,5
AIT-DADO6	27	25	16	19	14 x 1,5
AIT-DADO9	27	25	15	17	12 x 1,25
AIT-DADO10	33	23	23	19	12 x 1,5
AIT-DAAL	27	22	19	19	12 x 1,25
AIT-DAAL1	27	22	19	19	12 x 1,5
AIT-DAAL2	34	22	20	19	12 x 1,25
AIT-DAAL3	34	22	20	19	12 x 1,5
AIT-DAAL6	27	25	16	19	14 x 1,5
AIT-DAAL15	27	25	16	3/4"	1/2UNF

FLAT SEAT NUT

Ref.	A	B	C	D	E
AIT-DADO3	29	28	21	19	12 x 1,25

SPHERICAL SEAT NUT

Ref.	A	B	C	D	E
AIT-DADO5	28	25	17	19	14 x 1,5
AIT-DADO7	28	25	17	17	12 x 1,25
AIT-DADO8	27	25	15	17	12 x 1,25

AIT-DAAL8	31	25	20	19	14 x 1,5
-----------	----	----	----	----	----------



CONICAL SEAT BOLT

Ref.	A	B	D	E	F
AIT-BA75	75	14	48	19	12 x 1,25
AIT-BB75	75	14	48	19	12 x 1,5
AIT-BL75	75	14	48	17	14 x 1,5
AIT-BH75	75	14	46	19	12 x 1,75
AIT-BG75	75	14	48	17	12 x 1,5

FLAT SEAT BOLT

Ref.	A	B	D	E	F
AIT-BP80	80	20	54	19	12 x 1,25

SPHERICAL SEAT BOLT

Ref.	A	B	D	E	F
AIT-BF75	75	14	54	19	14 x 1,5
AIT-BM75	75	14	74	17	12 x 1,5
AIT-BM85	85	14	64	17	12 x 1,5

Ref.	Spline	Lenght	Application
AIT-70AR	12 x 1,5	Front wheel stud	Alfa Romeo (old style)
AIT-81AR	12 x 1,5	Rear wheel stud	Alfa Romeo (old style)
AIT-71M	14x1,25 - 14x1,5	L. 71 mm wheel stud	BMW Mini 06-07
AIT-80M	14x1,25 - 14x1,5	L. 80 mm wheel stud	BMW Mini 06-07
AIT-65CH	1/2" x 20UNF	L. 65 mm wheel stud	Chrysler
AIT-68CH	12 x 1,5	L. 68 mm wheel stud	Chrysler
AIT-59D	12 x 1,25	L. 59 mm wheel stud	Daewoo Matiz
AIT-68C	12x1,5	L. 68 mm wheel stud	Ford
AIT-82C	12x1,5	L. 82 mm wheel stud	Ford
AIT-100C	12x1,5	L. 100 mm wheel stud	Ford
AIT-64HY	12x1,5	L. 64 mm wheel stud	Hyundai
AIT-68H	12x1,5	L. 68 mm wheel stud	Honda
AIT-68STR	14x1,5	L. 68 mm wheel stud	Lancia Stratos
AIT-72J	1/2" x 20UNF	L. 72 mm wheel stud	Jaguar - Aston Martin
AIT-84J	12x1,5	L. 84 mm wheel stud	Jaguar
AIT-61M	12x1,5	L. 61 mm wheel stud	Mazda
AIT-65M	12x1,5	L. 65 mm wheel stud	Mazda
AIT-67MIT	12x1,5	L. 67 mm wheel stud	Mitsubishi
AIT-62N	12x1,25	L. 62 mm wheel stud	Nissan
AIT-64N	12x1,25	L. 64 mm wheel stud	Nissan
AIT-70OP	12x1,5 - 12x1,5	L. 70 mm wheel stud	Opel
AIT-90OP	12x1,5 - 12x1,5	L. 70 mm wheel stud	Opel
AIT-100OP	12x1,5 - 12x1,5	L. 100 mm wheel stud	Opel
AIT-65PO	14x1,5 - 14x1,5	L. 65 mm wheel stud	Porsche
AIT-100G	14x1,5	L. 100 mm wheel stud	Porsche
AIT-60R	12x1,5	L. 60 mm wheel stud	Rover
AIT-66S	12x1,25	L. 66 mm wheel stud	Subaru
AIT-73T	12x1,5	L. 73 mm wheel stud	Toyota
AIT-69V	12x1,5	L. 69 mm wheel stud	Volvo
AIT-70V	12x1,5	L. 70 mm wheel stud	Volvo
AIT 74V	12X1,5	L. 70 mm wheel stud	Volvo
AIT-74NSR	5/8"	L. 74 mm wheel stud	NASCAR
AIT-108NSR	5/8"	L. 108 mm wheel stud	NASCAR
AIT-68F	14x1,5 - 14x1,5	L. 68 mm wheel stud	VW-Audi
AIT-82F	14x1,5 - 14x1,5	L. 82 mm wheel stud	VW-Audi
AIT-100F	14x1,5 - 14x1,5	L. 100 mm wheel stud	VW-Audi
AIT-68A	12X1,25 - 12X1,25	L. 68 mm wheel stud	Universal application
AIT-68B	12x1,25 - 12x1,5	L. 68 mm wheel stud	Universal application
AIT-82A	12x1,25 - 12x1,25	L. 82 mm wheel stud	Universal application
AIT-82B	12x1,25 - 12x1,5	L. 82 mm wheel stud	Universal application
AIT-100A	12x1,25 - 12x1,25	L. 100 mm wheel stud	Universal application
AIT-100B	12x1,25 - 12x1,5	L. 100 mm wheel stud	Universal application



Competition light weight wheel spacer and aluminium high quality wheel spacers are produced on digitally controlled C.N.C. machinery to guarantee parallel planes and original profile centre location hubs.

The "Light" version wheel spacers are machined from castings with multiple bolt patterns (4 and 5 holes) resulting in a very cost effective spacer ideal for road applications.

The "Competition" version spacers, while produced on the same digital C.N.C. machinery, are made from higher grade aluminium bar and machined for specific models. These spacers are anodised to prevent oxydation. Priced in axle sets of 2 pieces. For ease of fittment there is a full range of bolts or studs and nuts.

Attention is drawn to the German TÜV homologation attained on all A.I.Tech light wheel spacers. Each spacer features individual TUV stamp and production date.



for more technical informations
please visit www.aitechitaly.com

Ref.	Application	(mm)
AIT-D01L	UNIVERSAL 4 and 5 holes	10mm
AIT-D10L/12L	FIAT-LANCIA-ALFA after 1990 4-5/98mm P.C.D.	17mm
AIT-D16L	LANCIA KAPPA 5 holes on 108mm P.C.D.	18mm
AIT-D18L	FIAT ULISSE CITR.-EVASION-PEUG.806-L. ZETA	20mm
AIT-D20L	PEUGEOT 4 holes on 108mm P.C.D.	16mm
AIT-D30L/32L	RENAULT 4 holes on 100mm P.C.D.	19mm
AIT-D40L/42L	VOLKSWAGEN 4 holes on 100mm P.C.D.	20mm
AIT-D44L	VOLKSWAGEN 4 holes on 100mm P.C.D.	16mm
AIT-D50L	OPEL 4 holes on 100mm P.C.D.	10mm
AIT-D52L	OPEL CALIBRA 4x4-OMEGA 5/110mm P.C.D.	10mm
AIT-D54L	OPEL CORSA-TIGRA-VECTRA-FIAT GR. PUNTO 4/100mm	20mm
AIT-D55L	OPEL CALIBRA 4x4-OMEGA 5 /110mm P.C.D.	22mm
AIT-D56L	ALFA ROMEO 159- FIAT N. CROMA '05 on 5/110 P.C.D.	20mm
AIT-D60L	FORD 4 holes on 108mm P.C.D.	17mm
AIT-D70L	HONDA CIVIC 4 holes on 100mm P.C.D.	16mm
AIT-D80L	BMW 5 holes on 120mm P.C.D.	18mm
AIT-D82L	BMW M5 after 1997 5 holes on 120mm P.C.D.	18mm
AIT-D90L	AUDI A4-A6 5 holes on 112mm P.C.D.	20mm
AIT-D94L	SMART	12mm
AIT-D100L	MERCEDES 5 holes on 112mm P.C.D.	18mm
AIT-D102L	MERCEDES 5 holes on 112mm P.C.D.	26mm
AIT-D104L	MERCEDES 5 holes on 112mm P.C.D.	14mm
AIT-D110L	CHEVROLET CORVETTE 5 holes on 120mm P.C.D.	16mm
AIT-D120L	VOLVO 850 5 holes on 108mm P.C.D.	20mm
AIT-D132L	SAAB 5 holes on 110mm P.C.D.	20mm
AIT-D140L	ROVER 200-400 4 holes on 100mm P.C.D.	16mm
AIT-D142L	ROVER 600-800 4 holes on 114,3mm P.C.D.	16mm
AIT-D150L	CITROEN (not XM) 4 holes on 108mm P.C.D.	18mm
AIT-D160L	MAZDA 323-626 4 holes on 100mm P.C.D.	16mm
AIT-D170L	TOYOTA CELICA 5 holes on 100mm P.C.D.	20mm
AIT-D171L	TOYOTA CELICA (4WD) 5 holes on 100mm P.C.D.	16mm
AIT-D172L	TOYOTA RAV 4x4 5 holes on 114mm P.C.D.	20mm
AIT-D180L	HYUNDAI 4 holes on 114,3mm P.C.D.	18mm
AIT-D190L	NISSAN SILVYA 5 holes on 114,3mm P.C.D.	18mm
AIT-D192L	NISSAN MICRA-ALMERA 4 holes on 100mm P.C.D.	16mm
AIT-D196L	NISSAN PRIMERA 4 holes on 114,3mm P.C.D.	16mm
AIT-D210L	PORSCHE 5 holes on130mm P.C.D.	13mm
AIT-D211L	PORSCHE 5 holes on130mm P.C.D.	21mm
AIT-D212	PORSCHE 5 holes on 130mm P.C.D.	28mm
AIT-D220	SUBARU IMPREZA T.-LEGACY T.	16mm
AIT-D230A	LOTUS ELISE 4 holes on 95mm P.C.D.	20mm
AIT-D230B	LOTUS ELISE 4 holes on 95mm P.C.D.	30mm
AIT-D240	MITSUBISHI 3000-ECLIPSE 5 /114,3mm P.C.D.	16mm
AIT-D260	MIT.S.CARISMA-MAZDA 626-323 V6 5/114,3mm P.C.D.	18mm
AIT-D270	HONDA CRV-HRV-INTEGRA 5/114,3mm P.C.D.	22mm
AIT-D280	CHRY.VOYAGER-JEEP CHEROKEE 5/114,3 P.C.D.	20mm
AIT-D290	DAEWOO MATIZ 4 holes on 114,3 P.C.D.	22mm
AIT-D292	DAEWOO LEGANZA	18mm
AIT-D300A	JAGUAR "R" TYPE and ASTON MARTIN	20mm
AIT-D300B	JAGUAR "R" TYPE and ASTON MARTIN	25mm
AIT-D310	MASERATI	22mm
AIT-D315	BMW MINI 1 and MINI COOPER	18mm

Clutch systems designed by **A.I.Tech.** are a direct replacement of the original equipment parts for competition and fast road applications.

These clutch drive discs are available with sprung or rigid drive hubs.

A.I.Tech. clutches meet most levels of competition usage until very high engine torque levels require a multiplate system.



www.aitechitaly.com

Ref.	Description	Diameter	Spline
AIT-10160	FIAT	160mm	17mmx20s
AIT-10170	FIAT-AUTOBIANCHI-CINQUECENTO	170mm	17mmx20s
AIT-10171	FIAT	170mm	19mmx17s
AIT-10180	FIAT-CINQUECENTO SPORTING/600 SP.	180mm	17mmx20s
AIT-10181	FIAT	180mm	19mmx17s
AIT-10182	FIAT	180mm	23mmx20s
AIT-10190	FIAT-UNO TURBO untill year 1988	190mm	19mmx17s
AIT-10191	FIAT-UNO TURBO after year 1988	190mm	23mmx20s
AIT-10192	FIAT PUNTO SX-ELX 1580	190mm	17mmx20s
AIT-10200	FIAT-UNO TURBO after year 1990	200mm	23mmx20s
AIT-10201	FIAT	200mm	19mmx17s
AIT-10215	FIAT LANCIA	215mm	23mmx20s
AIT-10216	FIAT	215mm	19mmx17s
AIT-10230	FIAT-LANCIA-ALFA ROMEO	230mm	23mmx20s
AIT-10193	LANCIA DELTA GR.A (double disc)	190mm	25,4mmx23s
AIT-20180	PEUGEOT 205 1,3 RALLY - 106 RALLY	180mm	21mmx18s
AIT-20181	PEUGEOT	200mm	17mmx20s
AIT-20200	P.205/309-106 1,6 16V-C.SAXO 1,6Lt.16v	215mm	21mmx18s
AIT-20215	PEUGEOT 309 16V/405	200mm	21mmx18s
AIT-20230	PEUGEOT 206 2000 16V WRC	230mm	21mmx18s
AIT-30190	OPEL CORSA 1200	190mm	18,5mmx14s
AIT-30200	OPEL CORSA GSI	200mm	17mmx14s
AIT-30201	OPEL	215mm	25mmx14s
AIT-30215	OPEL KADETT GSI 1,8/2,0	215mm	21mmx24s
AIT-30216	OPEL	225mm	25mmx14s
AIT-30225	OPEL KADETT GSI 16V	228mm	21mmx24s
AIT-30228	OPEL	228mm	25mmx14s
AIT-40180	RENAULT	180mm	17mmx20s
AIT-40190	RENAULT	190mm	17mmx20s
AIT-40200	RENAULT 5 GTT./CLIO 16V/WILLIAMS	200mm	17mmx20s
AIT-40215	RENAULT MEGANE 2.0lt. 16V/CLIO RS	215mm	22mmx26s
AIT-45190	ROVER	190mm	22mmx26s
AIT-45200	ROVER 216	200mm	21mmx18s
AIT-45215	ROVER	215mm	21mmx18s
AIT-50190	VOLKSWAGEN	190mm	25,4mmx24s
AIT-50200	VOLKSWAGEN/ALFA ROMEO	200mm	21mmx24s
AIT-50210	VOLKSWAGEN	210mm	21mmx24s
AIT-50211	VOLKSWAGEN GOLF 16V	210mm	21mmx24s

This uprated clutch cover is a direct replacement for the standard unit, having a stronger diaphragm giving a 30% extra clamp load. Best results with the **A.I.Tech.** drive disc.

Ref.	Application
AIT-160	Clutch cover for FIAT 160mm drive disc
AIT-170	Clutch cover for FIAT 170mm drive disc
AIT-180	Clutch cover for FIAT and PEUGEOT 180mm drive disc
AIT-190	Clutch cover for FIAT 190mm drive disc
AIT-200	Clutch cover for FIAT 200mm drive disc
AIT-200A	Clutch cover for PEUGEOT 200mm drive disc
AIT-200B	Clutch cover for RENAULT 200mm drive disc
AIT-200C	Clutch cover for OPEL CORSA 8V 200mm drive disc
AIT-200CC	Clutch cover for OPEL CORSA 16V 200mm drive disc (standard flywheel)
AIT-200D	Clutch cover for VOLKSWAGEN 200mm drive disc
AIT-200F	Clutch cover for ALFA ROMEO 200mm drive disc
AIT-200AA	Clutch cover for PEUG.106 S16 and CITR.SAXO VTS 200mm drive disc
AIT-200AB	Clutch cover for PEUGEOT/ROVER
AIT-215	Clutch cover for FIAT 215mm drive disc
AIT-215A	Clutch cover for PEUGEOT 215mm drive disc
AIT-215B	Clutch cover for RENAULT CLIO RS-MEGANE COACH
AIT-215C	Clutch cover for OPEL 215mm drive disc
AIT-215D	Clutch cover for FIAT 215mm drive disc
AIT-215P	Clutch cover for FIAT PUNTO 215mm drive disc
AIT-230	Clutch cover for FIAT-LANCIA-ALFA ROMEO 230mm drive disc
AIT-230AR	Clutch cover for ALFA ROMEO 156 230mm drive disc
AIT-230C	Clutch cover for OPEL 228mm drive disc
AIT-230CC	Clutch cover for OPEL 228mm drive disc (pot type flywheel)
AIT-240	Clutch cover for FORD COSW. 240mm drive disc
AIT-230A	Clutch cover for L.DELTA EVO / 16V / A.ROMEO 155 Q4 230 mm drive disc (only with original used cover back to Tecno 2)
AIT-230M	Clutch cover for MITSUBISHI IV-V 230mm drive disc (only with original used cover back to Tecno 2)
AIT-230S	Clutch cover for SUBARU IMPREZA 230mm drive disc (only with original used cover back to Tecno 2)
AIT-240M	Clutch cover for MITSUBUSHI EVO VII-VIII-IX (only with original used cover back to Tecno 2)
AIT-240S	Clutch cover for SUBARU IMPREZA STI 240mm (only with original used cover back to Tecno 2)
AIT-JTD-KIT	FIAT-LANCIA JTD clutch assy. Composed by: organic material drive disc, pressure plate cover and release bearing.
AIT-JTD-AR KIT	ALFA ROMEO JTD clutch assy. Composed by: organic material drive disc, pressure plate cover and bearing.
AIT-HDI-P-KIT	PEUGEOT HDi clutch assy. Composed by: organic material drive disc, pressure plate cover and release bearing.



AIT - Pro Tack Evo



AIT - Race Time 3



AIT - Race Time 1



AIT - Pro Rev



AIT - Rainlight

AIT - Pro Tack Evo

High performance digital dashboard unit that can be installed in any type of car. The instrument panel also offers the typical information found on a street car dashboard with directional indicator lights and a graphic LCD panel that shows a real time view of the car's parameters.

Suitable for sport prototypes, formula cars, touring and rally cars. Features a graphic LCD panel, 4 hours of data logging, 999 laps memory using optional trackside beacon and optical onboard sensor, CAN BUS (for optional expansion). USB, firmware upgradable (freely downloadable from the web site). It is supplied complete with wiring harness, sensors, PC software and manual. Dimension: 160x85x40mm.

AIT - Pro Rev

Is a tachometer that can be applied to any type of engine (2 or 4 stroke with 1 or more coils), using the tacho output of the ignition system, or connecting in to one of the available coils. Features: 10 programmable shift lights, RPM peak value record, 6 hours data Logger (optional). Dimension: 80 mm. diam. - 58 mm. deep

AIT - Race Time 1

Rally timer with waterproof membrane function keyboard and 5 digit timedisplay with 0,1 sec. accuracy. Dimension: 100x65x24mm only.

AIT - Race Time 3

Circuit chronometer with waterproof membrane function keyboard and 5 digit time display with 0,01 sec. accuracy. Features: 250 laps memory, intermediate time, best time, connection to PC or printer. It is supplied complete with PC software and cable. Dimension: 100x65x24mm only.

AIT - Rainlight

Mandatory in FIA single seater competition, this safety accessory uses 50 very bright red LED's to give maximum visibility in rainy and foggy conditions. The wiring connector contains a resistor to ensure continuous reliable use. Very compact design, dimensions : 51mm diam x 51mm thick, 2 mounting points on 61mm pcd.

A.I.Tech. gauges are strong in construction with the case made with very high quality nylon. The dial illumination in white light.

Dial faces are white with red needles, black lettering and a matt black bezel. "B" version is coloured with black dial, white lettering and red needle. Calibration of our gauges is of the highest standard. A full range of associated VDO sensors are available on demand.

Latest version of tachometers have "swift lights" inside the dial. You can order special gauges with your own logo on the dial.

for more technical informations
please visit www.aitechitaly.com



Advanced Innovation Technology products
are distributed by:

